

# S6301-56ST

## L2/L3 OOB Management Switch

Enterprises network comprises of many connected devices such as laptops, computers, and access point to meet the employee's demand at work. The S6301-56ST L2/L3 OOB management switch is a high quality and low-cost switch that provides enterprise and small businesses versatile scalability and simple management. With a small form factor and high-density configurations, the S6301-56ST L2/L3 OOB management switch is a white box switch that can be positioned in enterprises due to its versatile connectivity and in data center as a management switch to manage all the OOB ports in the rack.



## KEY BENEFITS

- A broad range of Layer 2 and Layer 3 intelligent-enterprise switching solutions
- Top connectivity for small, medium sized or branch-level offices.
- Simple L2/L3 management switch for data center switch and servers.
- Advanced quality of service (QoS) and resiliency

## KEY FEATURES

- High density 48 x 1G + 8 x 10G service interfaces
- 130Gbps switching capacity
- Intel® Denverton Dual/Quad-Cores
- Broadcom Trident3-X2 Silicon
- 1 RU small form factor with 440mm depth
- Hot swappable power supplies with 1+1 redundancy support
- Hot swappable fan modules with 1+1 redundancy support

# SPECIFICATIONS

## PHYSICAL

- ◆ 8 x 1G/10G SFP+ ports
- ◆ 24 x 100M/1G RJ45 port
- ◆ 24 x 1G RJ45 port
- ◆ 1 x 100/1000M RJ45 management port
- ◆ 1 x RJ45 serial console port
- ◆ 1 x USB 2.0 Type-A port

Processor Standard : Intel Denverton 2-Core @ 1.6GHz  
Premium : Intel Denverton 4-Core @ 1.6GHz

Memory Standard : 8GB DDR4  
Premium : 16GB DDR4

Storage 32GB SSD

ASIC Broadcom Trident3-X2 BCM56277

LED Power and System status LEDs per unit  
Link and Activity LEDs per port  
FAN Status LED per FAN  
PSU Status LED per PSU

Chassis (WxDxH) 1RU, 440 x 440 x 43.8 mm or  
17.32" x 17.32" x 1.72"  
Weight: 5.62kg or 12.39lbs

Redundancy Hot swappable, 1+1 redundant PSU  
Hot swappable, 1+1 redundant Fans

## ENVIRONMENTAL

Power Specs. AC input: 100 to 240V, 3A  
DC input: -36 to -72V, 6A  
Typical power: 64 Watts (no transceiver)

Max. Operating Specs. Operating temperature: 0°C to 45°C (32°F to 113°F)  
Operating humidity: 5% to 95% (RH), non-condensing

Max. Non-Operating Specs. Storage temperature: -40°C to 70°C (-40°F to 158°F)  
Storage humidity: 5% to 95% (RH), non-condensing

## PERFORMANCE

Switching Capacity 130 Gbps

Packet Buffer 4 MB

## REGULATORY COMPLIANCE

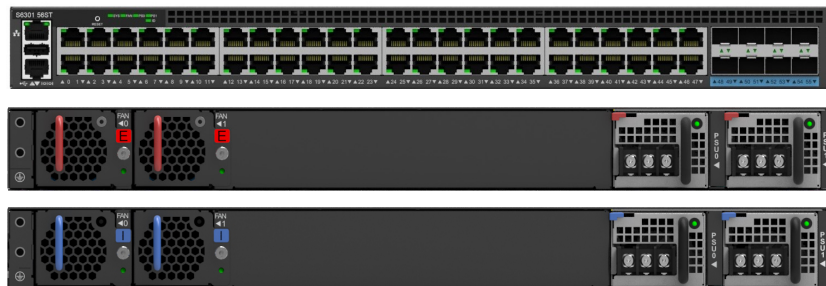
Safety	UL 62368-1	EMC	FCC Part 15, Subpart B, Class A
	IEC 62368-1		ICES-003, Class A
Environment	WEEE		EN 55032, Class A
			EN 300 386
			EN 55035
			VCCI CISPR 32, Class A

Specifications are subject to change without notice.  
Contact our sales team for current configuration options.

# S6301-56ST

Cloud &  
Data Center  
Solutions

## S6301-56ST Front and Back Views



Front to Back Airflow

Back to Front Airflow

## ACCESSORIES

Compatible Transceivers Types  
10G SFP+ SR, 10G SFP+ LR, 10G SFP+ ER, 10G SFP+ ZR

### Available to Order

Power Supply Types  
PSU-151-DESR, 150W DC, exhaust air flow  
PSU-151-DISB, 150W DC, intake air flow  
PSU-151-AESR, 150W AC, exhaust air flow  
PSU-151-AISB, 150W AC, intake air flow

Fan Types  
FAN-402825-HDN, exhaust air flow  
FAN-402825-CDN, intake air flow

